

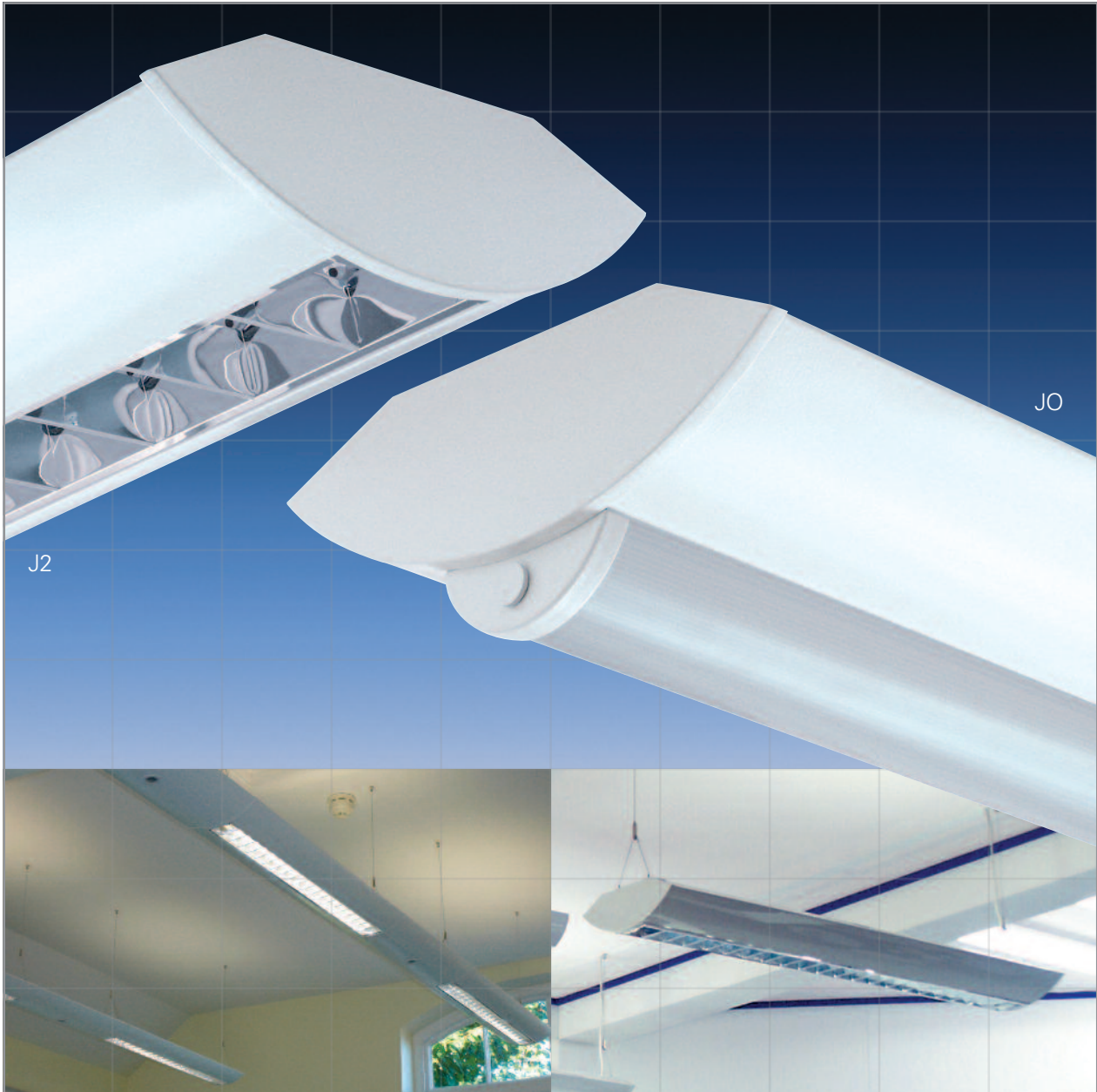
# J Series

[www.fluorel.co.uk/products/surface.htm](http://www.fluorel.co.uk/products/surface.htm)

FLC Digital Dimming  
System Compatible

J  
Series

10/12



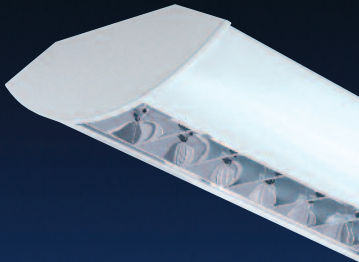
- Suspended range with direct/indirect light distribution
- Individual or continuous mounting
- T5 single or twin lamp options in all sizes
- Aids designers to follow LG7 recommendations
- Integral emergency conversions including self test
- Dimmable options - compatible with Fluorel FLC control system
- Infill sections purpose made for continuous rows
- Wall or ceiling mounting accessories available to order

**Fluorel**Lighting  
Lighting for a brighter future

**Fluorel Lighting is a leading supplier  
of innovative energy efficient lighting**

T5 direct/indirect range of suspended luminaires. Single or twin lamp with louvre or diffuser controllers

J2



**J2 Series - Mirror Wedge Louvre**

Size	Part Number	Lamp
600mm*	J2Li114SOL	1x14w
	J2Li214SOL	2x14w
	J2Li124HOL	1x24w
	J2Li224HOL	2x24w
900mm*	J2Li121SOL	1x21w
	J2Li221SOL	2x21w
	J2Li139HOL	1x39w
	J2Li239HOL	2x39w
1200mm	J2Li128SOL	1x28w
	J2Li228SOL	2x28w
	J2Li154HOL	1x54w
	J2Li254HOL	2x54w
1500mm	J2Li135SOL	1x35w
	J2Li235SOL	2x35w
	J2Li149HOL	1x49w
	J2Li249HOL	2x49w
	J2Li180HOL	1x80w
	J2Li280HOL	2x80w

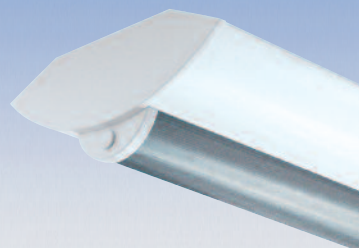
JO



**JO Series - Polycarbonate Satinee Diffuser**

Size	Part Number	Lamp
600mm*	JO114SOL	1x14w
	JO214SOL	2x14w
	JO124HOL	1x24w
	JO224HOL	2x24w
900mm*	JO121SOL	1x21w
	JO221SOL	2x21w
	JO139HOL	1x39w
	JO239HOL	2x39w
1200mm	JO128SOL	1x28w
	JO228SOL	2x28w
	JO154HOL	1x54w
	JO254HOL	2x54w
1500mm	JO135SOL	1x35w
	JO235SOL	2x35w
	JO149HOL	1x49w
	JO249HOL	2x49w
	JO180HOL	1x80w
	JO280HOL	2x80w

JC



**JC Series - Polycarbonate Clear Diffuser**

Size	Part Number	Lamp
600mm*	JC114SOL	1x14w
	JC214SOL	2x14w
	JC124HOL	1x24w
	JC224HOL	2x24w
900mm*	JC121SOL	1x21w
	JC221SOL	2x21w
	JC139HOL	1x39w
	JC239HOL	2x39w
1200mm	JC128SOL	1x28w
	JC228SOL	2x28w
	JC154HOL	1x54w
	JC254HOL	2x54w
1500mm	JC135SOL	1x35w
	JC235SOL	2x35w
	JC149HOL	1x49w
	JC249HOL	2x49w
	JC180HOL	1x80w
	JC280HOL	2x80w

\*Please note – these sizes to special order only

**Dimming and Emergency Lighting options**

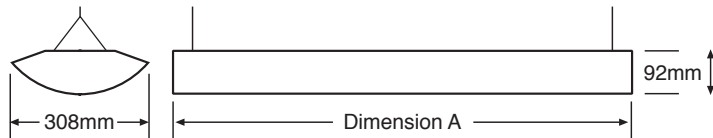
Digital dimming versions available – replace last “L” in the required part number with “DDL”.  
 Integral emergency conversions are available for the 1200mm and 1500mm sizes. Add suffix /EMG for 3hr duration and suffix /STEMG for self test option. Remote mounting is required for smaller sizes.

### Part Numbers

Part numbers shown are for individual luminaires. When continuously mounted add "-E" to part number for end of run fittings and "-M" to part number for intermediate or middle luminaires. eg. JO235SOL-E or J2Li154HOL-M

### Dimension A

600mm	-	14w and 24w
900mm	-	21w and 39w
1200mm	-	28w and 54w
1500mm	-	35w, 49w and 80w



Adjustable Stainless Steel Wire Suspension



Bernards Heath School, St. Albans. Consultants, Mace Group (Heritford)

### Continuous Mounting

Designed to be suspended either individually or joined to form continuous features, the J Series body is available to suit single or twin T5 lamps at all lengths. Plain infill sections are available to order. Infill's can also be manufactured to accommodate certain lighting control sensors, smoke detectors, speakers, downlighters or signage to special order.

Continuously mounted luminaires are manufactured with connection fixings and through wiring facility. All products are supplied complete with 2 x 2 metre adjustable stainless steel single wire suspension sets and necessary lamps. Suspension drops up to 5 metres are available to special order.

# J Series

[www.fluorel.co.uk/products/surface.htm](http://www.fluorel.co.uk/products/surface.htm)

## Options

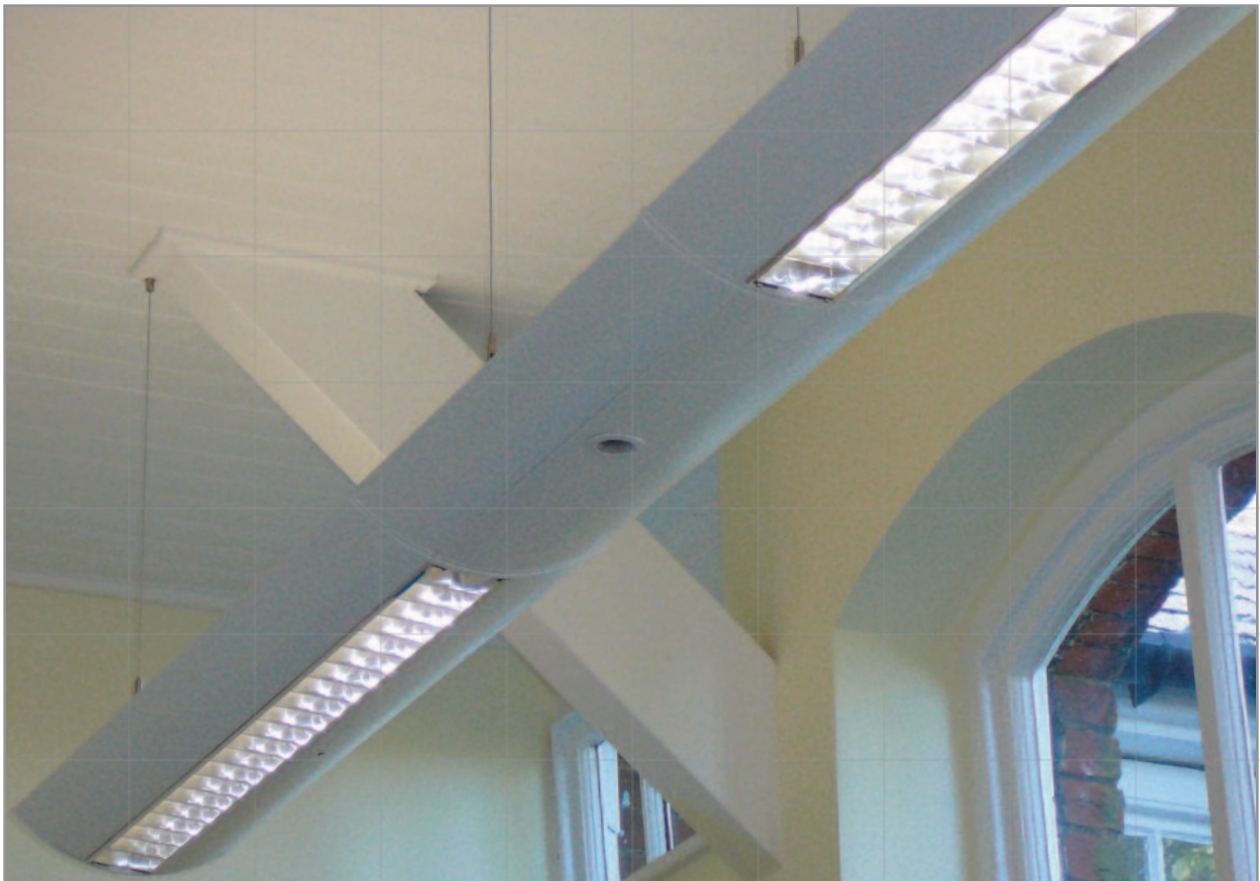
### Suspension options

- Single wire adjustable up to 2mts as standard
- Suspension of up to 5mts to special order
- Ceiling stand-off brackets of approx 80mm
- Wall mounting brackets
- Conduit or chain suspension can be accommodated if preferred

### Controller options

- Mirror wedge louvre
- Satin polycarbonate diffuser
- Clear reeded polycarbonate diffuser

All options feature polycarbonate prismatic top panels to help prevent ingress of dirt and foreign bodies and improve diffused uplighting performance.



## Fluorel Lighting Limited Designers and manufacturers of luminaires

Fluorel Lighting Ltd, Unit 25 Eldon way,  
Hockley, Essex, SS5 4PS  
Tel +44(0)8458 643 643 Fax +44(0)20 8506 1792  
info@fluorel.co.uk www.fluorel.co.uk

  
**Fluorel**Lighting  
Lighting for a brighter future

Fluorel Lighting Limited has a policy of continuous development and in the interest of clients, reserves the right to change specifications or design and to supply products which may differ from those described and illustrated without notice and without liability.

**T5 WattMiser**<sup>™</sup>