

CF

Series

Shallow Surface Luminaires with Curved Profile

Single, Twin, Triple and Quad Lamp



White Louvre
with white cross blades



Reflector Louvre
with profiled cross blades

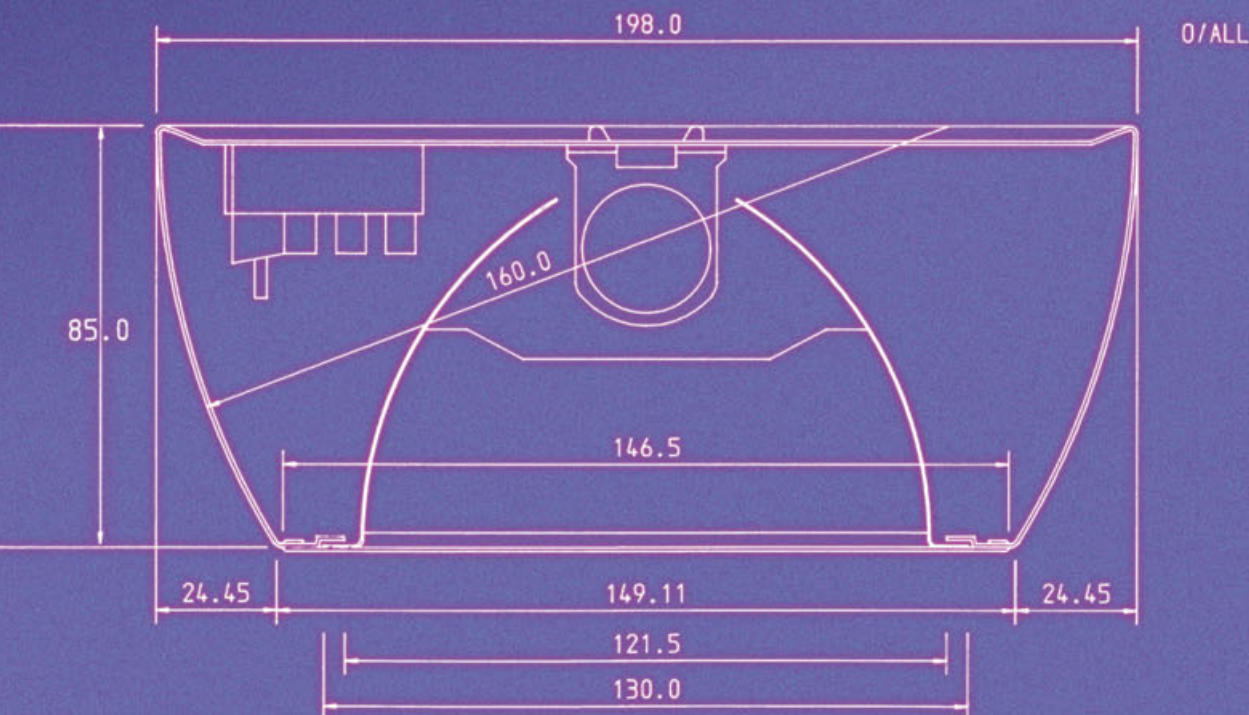


Computer Compatible Cat 2 Louvres



Prismatic Polycarbonate TPa Panels

Continuous Mounting Suspended Version

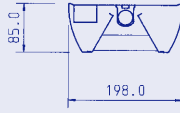
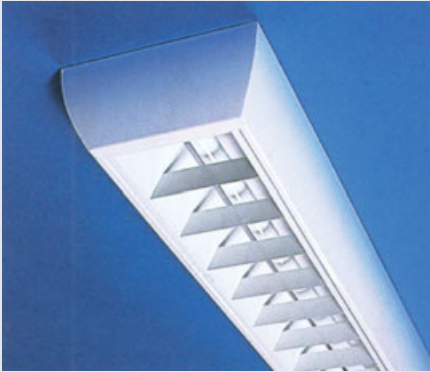


Fluorel Lighting



The reflectors are manufactured from white finished aluminium with white finished cross blades securely fixed to the body via quick release screws and is supplied as standard with safety straps and earth link. The shallow surface luminaire body is manufactured from zinc coated sheet steel and is supplied as standard in gloss white, other colour finishes are available to order.

Single Lamp

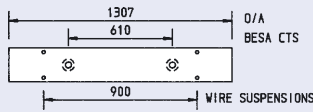


Photometric Data
Test No 187/LMT/HEVA
Light Output Ratio Up.00 Down.52 Total.52
SHR MAX 1.54 SHR Trans 1.67

Utilisation Factors UF(F)				SHR NOM = 1.50							
Room Reflectances			Room Index								
C	W	F	.75	1.00	1.25	1.50	2.00	2.50	3.00	4.00	5.00
.70	.50	.20	.37	.41	.44	.47	.50	.52	.53	.55	.56
.30			.34	.38	.41	.44	.47	.49	.51	.53	.55
.10			.31	.35	.39	.42	.45	.48	.49	.52	.53
.50	.50	.20	.36	.40	.43	.45	.48	.50	.51	.53	.54
.30			.33	.37	.40	.43	.46	.48	.50	.51	.53
.10			.31	.35	.38	.41	.44	.46	.48	.50	.52
.30	.50	.20	.36	.39	.42	.44	.47	.48	.49	.51	.52
.30			.33	.37	.40	.42	.45	.47	.48	.50	.51
.10			.31	.35	.38	.40	.43	.45	.47	.49	.50
00	00	00	.30	.34	.37	.39	.42	.44	.45	.47	.48
BZ Class			2	2	2	2	2	2	2	2	2

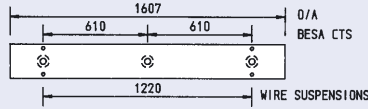
Single 4ft 36 Watt lamp 26mm diameter only

Control gear	Product Ref
Switch Start	CFWL-14SS
Pulse Start	CFWL-14EP
High Frequency	CFWL-14HF



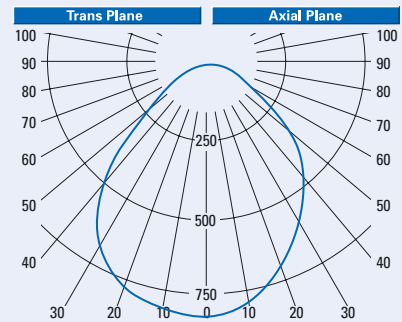
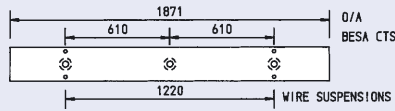
Single 5ft 58 Watt lamp 26mm diameter only

Control gear	Product Ref
Switch Start	CFWL-15SS
Pulse Start	CFWL-15EP
High Frequency	CFWL-15HF

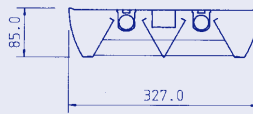


Single 6ft 70 Watt lamp 26mm diameter only

Control gear	Product Ref
Switch Start	CFWL-16SS
Pulse Start	CFWL-16EP
High Frequency	CFWL-16HF



Twin Lamps

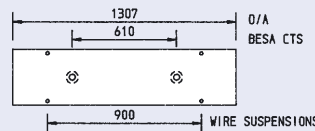


Photometric Data
Test No 188/LMT/HEVA
Light Output Ratio Up.00 Down.55 Total.55
SHR MAX 1.59 SHR Trans 1.77

Utilisation Factors UF(F)				SHR NOM = 1.50							
Room Reflectances			Room Index								
C	W	F	.75	1.00	1.25	1.50	2.00	2.50	3.00	4.00	5.00
.70	.50	.20	.38	.43	.46	.49	.52	.54	.56	.58	.59
.30			.35	.39	.43	.46	.49	.52	.54	.56	.58
.10			.32	.36	.40	.43	.47	.50	.52	.54	.56
.50	.50	.20	.37	.42	.45	.47	.50	.52	.54	.56	.57
.30			.34	.38	.42	.45	.48	.50	.52	.54	.56
.10			.32	.36	.40	.43	.46	.49	.50	.53	.54
.30	.50	.20	.37	.41	.44	.46	.49	.51	.52	.54	.55
.30			.34	.38	.41	.44	.47	.49	.51	.52	.54
.10			.32	.36	.39	.42	.45	.48	.49	.51	.53
00	00	00	.31	.35	.38	.40	.44	.46	.47	.49	.50
BZ Class			2	2	2	2	2	2	2	2	2

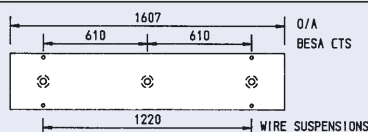
Twin 4ft 36 Watt lamps 26mm diameter only

Control gear	Product Ref
Switch Start	CFWL-24SS
Pulse Start	CFWL-24EP
High Frequency	CFWL-24HF



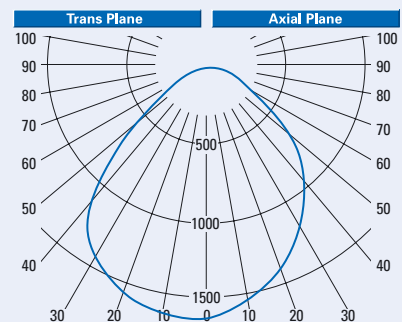
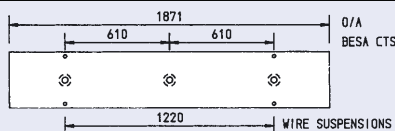
Twin 5ft 58 Watt lamps 26mm diameter only

Control gear	Product Ref
Switch Start	CFWL-25SS
Pulse Start	CFWL-25EP
High Frequency	CFWL-25HF



Twin 6ft 70 Watt lamps 26mm diameter only

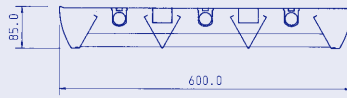
Control gear	Product Ref
Switch Start	CFWL-26SS
Pulse Start	CFWL-26EP
High Frequency	CFWL-26HF



White Louvre Shallow Surface Luminaires

All fittings can be supplied equipped with a single lamp emergency pack
Other sizes available on request. Full Photometric test reports available on request

Triple Lamps

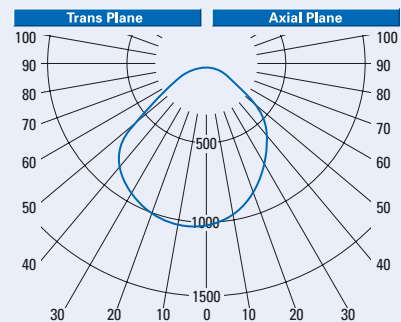
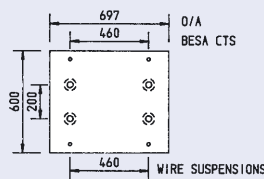


Photometric Data
Test No 189/LMT/HEVA
Light Output Ratio Up.00 Down.65 Total.65
SHR MAX 1.67 SHR Trans 2.01

Utilisation Factors UF(F)				SHR NOM = 1.50							
Room Reflectances			Room Index								
C	W	F	.75	1.00	1.25	1.50	2.00	2.50	3.00	4.00	5.00
.70	.50	.20	.42	.48	.52	.56	.60	.62	.64	.67	.68
	.30		.38	.44	.48	.52	.56	.59	.62	.65	.67
	.10		.35	.40	.45	.49	.54	.57	.59	.63	.65
.50	.50	.20	.42	.47	.51	.54	.58	.60	.62	.64	.66
	.30		.38	.43	.47	.51	.55	.58	.60	.62	.64
	.10		.35	.40	.45	.48	.53	.56	.58	.61	.63
.30	.50	.20	.41	.46	.50	.52	.56	.58	.60	.62	.63
	.30		.37	.42	.47	.50	.54	.56	.58	.61	.62
	.10		.34	.40	.44	.47	.52	.54	.56	.59	.61
00	00	00	.33	.38	.42	.45	.49	.52	.54	.56	.58
BZ Class			3	3	3	3	3	3	3	3	3

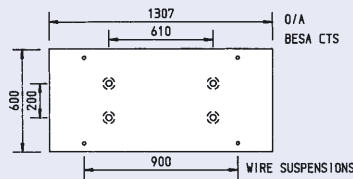
Triple 2ft 18 Watt lamps 26mm diameter only

Control gear	Product Ref
Switch Start	CFWL-32SS
Pulse Start	CFWL-32EP
High Frequency	CFWL-32HF



Triple 4ft 36 Watt lamps 26mm diameter only

Control gear	Product Ref
Switch Start	CFWL-34SS
Pulse Start	CFWL-34EP
High Frequency	CFWL-34HF



Quad Lamps

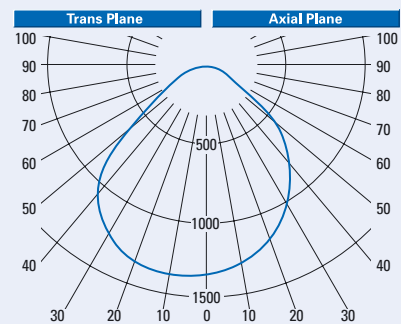
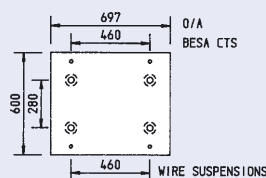


Photometric Data
Test No 190/LMT/HEVA
Light Output Ratio Up.00 Down.64 Total.64
SHR MAX 1.70 SHR Trans 1.94

Utilisation Factors UF(F)				SHR NOM = 1.50							
Room Reflectances			Room Index								
C	W	F	.75	1.00	1.25	1.50	2.00	2.50	3.00	4.00	5.00
.70	.50	.20	.42	.47	.52	.55	.59	.62	.63	.66	.67
	.30		.38	.43	.48	.51	.56	.59	.61	.64	.66
	.10		.35	.40	.45	.48	.53	.56	.58	.62	.64
.50	.50	.20	.41	.46	.50	.53	.57	.59	.61	.63	.65
	.30		.37	.42	.47	.50	.54	.57	.59	.62	.63
	.10		.35	.40	.44	.47	.52	.55	.57	.60	.62
.30	.50	.20	.40	.45	.49	.52	.55	.57	.59	.61	.62
	.30		.37	.42	.46	.49	.53	.55	.57	.60	.61
	.10		.34	.39	.44	.47	.51	.54	.56	.58	.60
00	00	00	.33	.38	.42	.45	.49	.51	.53	.56	.57
BZ Class			3	3	3	3	3	3	3	3	3

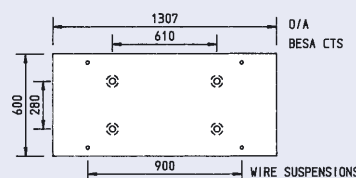
Quad 2ft 18 Watt lamps 26mm diameter only

Control gear	Product Ref
Switch Start	CFWL-42SS
Pulse Start	CFWL-42EP
High Frequency	CFWL-42HF



Quad 4ft 36 Watt lamps 26mm diameter only

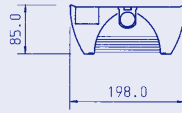
Control gear	Product Ref
Switch Start	CFWL-44SS
Pulse Start	CFWL-44EP
High Frequency	CFWL-44HF





The reflectors are manufactured from mirror finished super purity quality aluminium, with profile cross blades, securely fixed to the body via quick release screws and is supplied as standard with safety straps and earth link. The shallow surface luminaire body is manufactured from zinc coated sheet steel and is supplied as standard in gloss white, other colour finishes are available to order.

Single Lamp

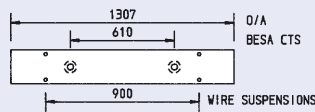


Photometric Data
Test No 191/LMT/HEVA
Light Output Ratio Up.00 Down.59 Total.59
SHR MAX 1.28 SHR Trans 1.32

Utilisation Factors UF(F)				SHR NOM = 1.25							
Room Reflectances			Room Index								
C	W	F	.75	1.00	1.25	1.50	2.00	2.50	3.00	4.00	5.00
.70	.50	.20	.44	.49	.52	.54	.57	.59	.60	.62	.63
.30			.41	.46	.49	.51	.55	.57	.58	.61	.62
.10			.38	.43	.47	.49	.53	.55	.57	.59	.61
.50	.50	.20	.43	.48	.51	.53	.55	.57	.58	.60	.61
.30			.40	.45	.48	.50	.53	.55	.57	.59	.60
.10			.38	.43	.46	.48	.52	.54	.55	.58	.59
.30	.50	.20	.42	.47	.49	.51	.54	.55	.57	.58	.59
.30			.40	.44	.47	.49	.52	.54	.55	.57	.58
.10			.38	.42	.45	.48	.51	.53	.54	.56	.57
00	00	00	.37	.41	.44	.46	.49	.51	.52	.53	.54
BZ Class			1	1	1	1	1	1	1	1	1

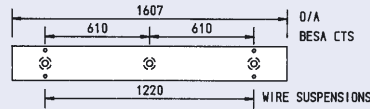
Single 4ft 36 Watt lamp 26mm diameter only

Control gear	Product Ref
Switch Start	CFR-14SS
Pulse Start	CFR-14EP
High Frequency	CFR-14HF



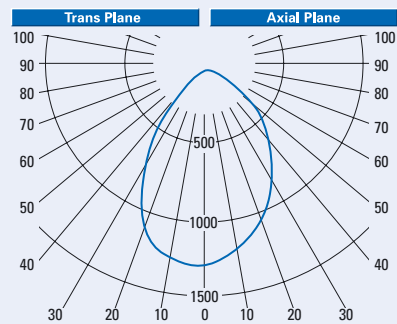
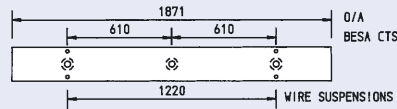
Single 5ft 58 Watt lamp 26mm diameter only

Control gear	Product Ref
Switch Start	CFR-15SS
Pulse Start	CFR-15EP
High Frequency	CFR-15HF

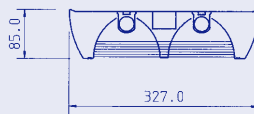


Single 6ft 70 Watt lamp 26mm diameter only

Control gear	Product Ref
Switch Start	CFR-16SS
Pulse Start	CFR-16EP
High Frequency	CFR-16HF



Twin Lamps

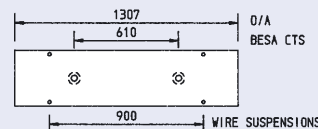


Photometric Data
Test No 192/LMT/HEVA
Light Output Ratio Up.00 Down.58 Total.58
SHR MAX 1.18 SHR Trans 1.20

Utilisation Factors UF(F)				SHR NOM = 1.00							
Room Reflectances			Room Index								
C	W	F	.75	1.00	1.25	1.50	2.00	2.50	3.00	4.00	5.00
.70	.50	.20	.41	.46	.49	.52	.55	.57	.59	.61	.62
.30			.37	.43	.46	.49	.53	.55	.57	.59	.61
.10			.34	.40	.44	.46	.50	.53	.55	.58	.59
.50	.50	.20	.40	.45	.48	.50	.54	.56	.57	.59	.60
.30			.37	.42	.45	.48	.51	.54	.55	.57	.59
.10			.34	.40	.43	.46	.49	.52	.54	.56	.57
.30	.50	.20	.39	.44	.47	.49	.52	.54	.55	.57	.58
.30			.36	.41	.45	.47	.50	.52	.54	.55	.57
.10			.34	.39	.43	.45	.49	.51	.52	.54	.56
00	00	00	.33	.38	.41	.44	.47	.49	.50	.52	.53
BZ Class			2	2	2	2	2	2	2	2	2

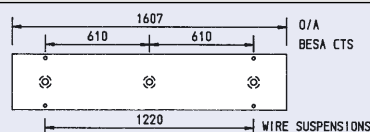
Twin 4ft 36 Watt lamps 26mm diameter only

Control gear	Product Ref
Switch Start	CFR-24SS
Pulse Start	CFR-24EP
High Frequency	CFR-24HF



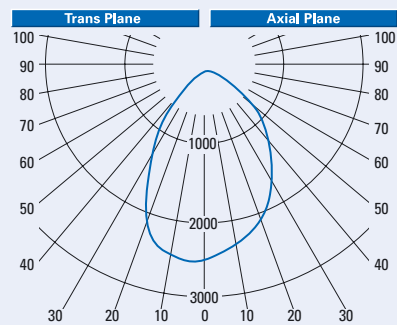
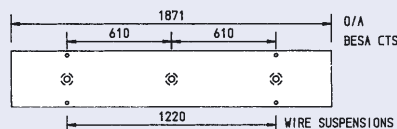
Twin 5ft 58 Watt lamps 26mm diameter only

Control gear	Product Ref
Switch Start	CFR-25SS
Pulse Start	CFR-25EP
High Frequency	CFR-25HF



Twin 6ft 70 Watt lamps 26mm diameter only

Control gear	Product Ref
Switch Start	CFR-26SS
Pulse Start	CFR-26EP
High Frequency	CFR-26HF



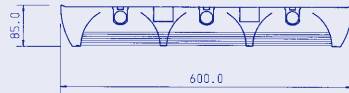
Reflector Louvre Shallow Surface Luminaires



FM2266
BS5750
PART 2

All fittings can be supplied equipped with a single lamp emergency pack
Other sizes available on request. Full Photometric test reports available on request

Triple Lamps

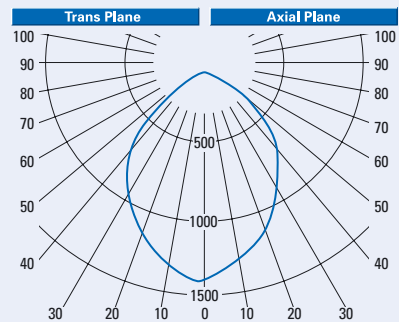
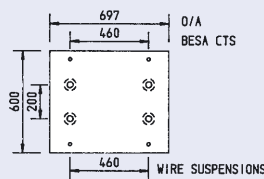


Photometric Data
Test No 193/LMT/HEVA
Light Output Ratio Up.00 Down.63 Total.63
SHR MAX 1.37 SHR Trans 1.56

Utilisation Factors UF(F)				SHR NOM = 1.25							
Room Reflectances			Room Index								
C	W	F	.75	1.00	1.25	1.50	2.00	2.50	3.00	4.00	5.00
.70	.50	.20	.43	.49	.53	.56	.60	.62	.64	.66	.68
.30	.30	.10	.39	.45	.50	.53	.57	.60	.62	.64	.66
.10	.10	.10	.36	.42	.47	.50	.54	.57	.60	.63	.65
.50	.50	.20	.42	.48	.52	.54	.58	.60	.62	.64	.65
.30	.30	.10	.38	.44	.49	.52	.55	.58	.60	.62	.64
.10	.10	.10	.36	.42	.46	.49	.53	.56	.58	.61	.62
.30	.50	.20	.41	.47	.50	.53	.56	.58	.60	.62	.63
.30	.30	.10	.38	.44	.48	.50	.54	.57	.58	.60	.62
.10	.10	.10	.35	.41	.46	.48	.52	.55	.57	.59	.61
00	00	00	.34	.40	.44	.47	.50	.53	.54	.56	.58
BZ Class			2	2	2	2	2	2	2	2	2

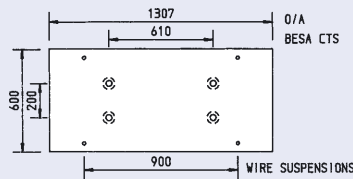
Triple 2ft 18 Watt lamps 26mm diameter only

Control gear	Product Ref
Switch Start	CFR-32SS
Pulse Start	CFR-32EP
High Frequency	CFR-32HF

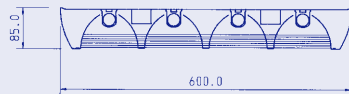


Triple 4ft 36 Watt lamps 26mm diameter only

Control gear	Product Ref
Switch Start	CFR-34SS
Pulse Start	CFR-34EP
High Frequency	CFR-34HF



Quad Lamps

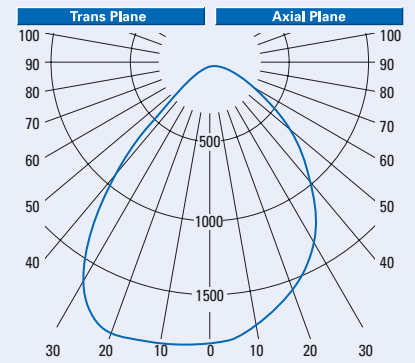
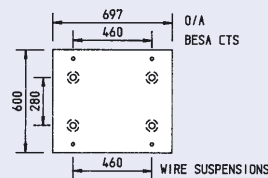


Photometric Data
Test No .194/LMT/HEVA
Light Output Ratio Up.00 Down.69 Total.69
SHR MAX 1.52 SHR Trans 1.62

Utilisation Factors UF(F)				SHR NOM = 1.50							
Room Reflectances			Room Index								
C	W	F	.75	1.00	1.25	1.50	2.00	2.50	3.00	4.00	5.00
.70	.50	.20	.52	.57	.61	.64	.67	.70	.71	.73	.75
.30	.30	.10	.48	.53	.57	.60	.64	.67	.69	.71	.73
.10	.10	.10	.45	.50	.54	.57	.62	.65	.67	.70	.72
.50	.50	.20	.51	.56	.59	.62	.65	.67	.69	.71	.72
.30	.30	.10	.47	.52	.56	.59	.63	.65	.67	.69	.71
.10	.10	.10	.45	.50	.54	.57	.61	.63	.65	.68	.69
.30	.50	.20	.50	.54	.58	.60	.63	.65	.67	.68	.69
.30	.30	.10	.47	.52	.55	.58	.61	.63	.65	.67	.68
.10	.10	.10	.45	.49	.53	.56	.59	.62	.64	.66	.67
00	00	00	.43	.48	.51	.54	.57	.59	.61	.63	.64
BZ Class			1	1	1	1	1	1	1	1	2

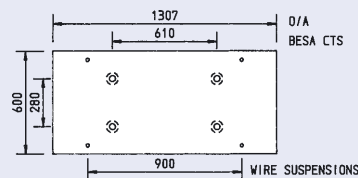
Quad 2ft 18 Watt lamps 26mm diameter only

Control gear	Product Ref
Switch Start	CFR-42SS
Pulse Start	CFR-42EP
High Frequency	CFR-42HF



Quad 4ft 36 Watt lamps 26mm diameter only

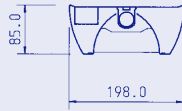
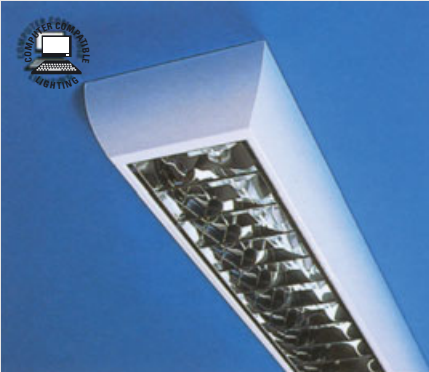
Control gear	Product Ref
Switch Start	CFR-44SS
Pulse Start	CFR-44EP
High Frequency	CFR-44HF





For use in interiors where it is known that a fairly widespread use of VDT's is intended. This could include areas where there is one terminal per desk for general usage, or where a few screens are used continuously. The shallow surface luminaire body is manufactured from zinc coated sheet steel and is supplied as standard in gloss white, other colour finishes are available to order.

Single Lamp

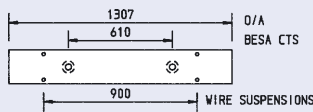


Photometric Data
Test No 195/LMT/HEVA
Light Output Ratio Up.00 Down.57 Total.57
SHR MAX 1.30 SHR Trans 1.35

Utilistation Factors UF(F)				SHR NOM = 1.25							
Room Reflectances			Room Index								
C	W	F	.75	1.00	1.25	1.50	2.00	2.50	3.00	4.00	5.00
.70	.50	.20	.46	.50	.53	.55	.58	.60	.61	.62	.63
.30			.43	.48	.51	.53	.56	.58	.59	.61	.62
.10			.41	.46	.49	.51	.54	.56	.58	.60	.61
.50	.50	.20	.45	.49	.52	.54	.56	.58	.59	.60	.61
.30			.43	.47	.50	.52	.55	.56	.57	.59	.60
.10			.41	.45	.48	.50	.53	.55	.56	.58	.59
.30	.50	.20	.44	.49	.51	.53	.55	.56	.57	.58	.59
.30			.42	.47	.49	.51	.53	.55	.56	.57	.58
.10			.40	.45	.48	.50	.52	.54	.55	.56	.57
00	00	00	.39	.44	.46	.48	.50	.52	.53	.54	.55
BZ Class			1	1	1	1	1	1	1	1	1

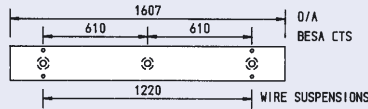
Single 4ft 36 Watt lamp 26mm diameter only

Control gear	Product Ref
Switch Start	CF2LIA-14SS
Pulse Start	CF2LIA-14EP
High Frequency	CF2LIA-14HF



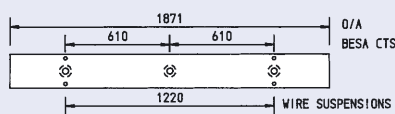
Single 5ft 58 Watt lamp 26mm diameter only

Control gear	Product Ref
Switch Start	CF2LIA-15SS
Pulse Start	CF2LIA-15EP
High Frequency	CF2LIA-15HF



Single 6ft 70 Watt lamp 26mm diameter only

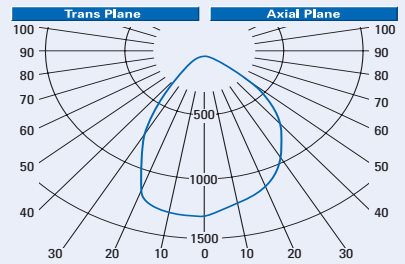
Control gear	Product Ref
Switch Start	CF2LIA-16SS
Pulse Start	CF2LIA-16EP
High Frequency	CF2LIA-16HF



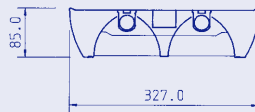
LG3 Luminance Values (cd/m2)

for initial lamp 3478 lumens, (T8K)

Angle	0	30	60	90
45	2274.9	3255.2	4912.7	7183.3
50	706.4	1431.6	3746.2	5895.5
55	197.9	328.5	2223.4	2947.6
60	164.2	256.0	603.8	922.6
65	142.9	160.0	125.7	108.6
70	113.0	155.4	91.8	63.6
75	0.0	0.0	0.0	0.0
80	0.0	0.0	0.0	0.0
85	0.0	0.0	0.0	0.0



Twin Lamps

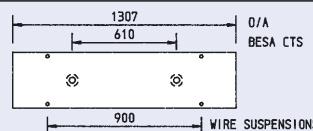


Photometric Data
Test No 196/LMT/HEVA
Light Output Ratio Up.00 Down.56 Total.56
SHR MAX 1.26 SHR Trans 1.29

Utilistation Factors UF(F)				SHR NOM = 1.25							
Room Reflectances			Room Index								
C	W	F	.75	1.00	1.25	1.50	2.00	2.50	3.00	4.00	5.00
.70	.50	.20	.45	.49	.52	.54	.57	.59	.61	.62	.63
.30			.42	.47	.50	.52	.55	.56	.58	.59	.61
.10			.40	.45	.48	.50	.53	.55	.56	.58	.60
.50	.50	.20	.44	.48	.51	.53	.55	.56	.57	.59	.59
.30			.42	.46	.49	.51	.53	.55	.56	.58	.58
.10			.40	.44	.47	.49	.52	.54	.55	.57	.58
.30	.50	.20	.43	.47	.50	.52	.54	.55	.56	.57	.57
.30			.41	.45	.48	.50	.52	.54	.55	.56	.57
.10			.39	.44	.47	.49	.51	.53	.54	.55	.56
00	00	00	.39	.43	.45	.47	.49	.51	.52	.53	.53
BZ Class			1	1	1	1	1	1	1	1	1

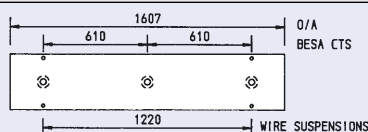
Twin 4ft 36 Watt lamps 26mm diameter only

Control gear	Product Ref
Switch Start	CF2LIB-24SS
Pulse Start	CF2LIB-24EP
High Frequency	CF2LIB-24HF



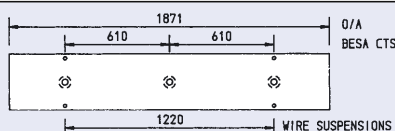
Twin 5ft 58 Watt lamps 26mm diameter only

Control gear	Product Ref
Switch Start	CF2LIB-25SS
Pulse Start	CF2LIB-25EP
High Frequency	CF2LIB-25HF



Twin 6ft 70 Watt lamps 26mm diameter only

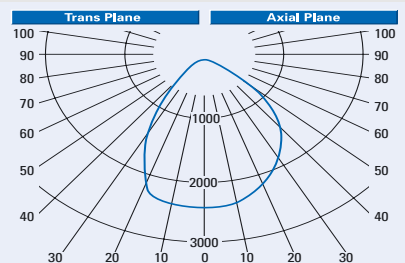
Control gear	Product Ref
Switch Start	CF2LIB-26SS
Pulse Start	CF2LIB-26EP
High Frequency	CF2LIB-26HF



LG3 Luminance Values (cd/m2)

for initial lamp 3478 lumens, (T8K)

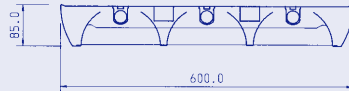
Angle	0	30	60	90
45	2357.7	2993.8	4735.0	6732.0
50	1132.7	1864.9	3466.5	5381.9
55	190.0	574.0	2203.1	2381.0
60	190.1	269.0	634.7	655.5
65	76.8	71.3	76.8	49.4
70	61.0	61.0	88.1	40.7
75	53.8	0.0	53.8	0.0
80	0.0	0.0	0.0	0.0
85	0.0	0.0	0.0	0.0



Cat 2 Mirror Louvre Shallow Surface Luminaires

All fittings can be supplied equipped with a single lamp emergency pack
Other sizes available on request. Full Photometric test reports available on request

Triple Lamps

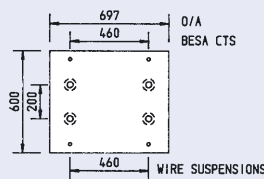


Photometric Data
Test No 197/LMT/HEVA
Light Output Ratio Up.00 Down.55 Total.55
SHR MAX 1.30 SHR Trans 1.55

Utilisation Factors UF(F)				SHR NOM = 1.25							
Room Reflectances			Room Index								
C	W	F	.75	1.00	1.25	1.50	2.00	2.50	3.00	4.00	5.00
.70	.50	.20	.41	.46	.49	.51	.54	.56	.57	.59	.60
	.30		.38	.43	.47	.49	.52	.54	.55	.57	.59
	.10		.36	.41	.44	.47	.50	.52	.54	.56	.58
.50	.50	.20	.40	.45	.48	.50	.53	.54	.55	.57	.58
	.30		.38	.43	.46	.48	.51	.53	.54	.56	.57
	.10		.35	.41	.44	.46	.49	.51	.53	.55	.56
.30	.50	.20	.40	.44	.47	.49	.51	.53	.54	.55	.56
	.30		.37	.42	.45	.47	.50	.51	.52	.54	.55
	.10		.35	.40	.43	.46	.48	.50	.51	.53	.54
00	00	00	.34	.39	.42	.44	.47	.48	.49	.51	.52
BZ Class			1	1	1	1	1	1	1	1	1

Triple 2ft 18 Watt lamps 26mm diameter only

Control gear	Product Ref
Switch Start	CF2LID-32SS
Pulse Start	CF2LID-32EP
High Frequency	CF2LID-32HF



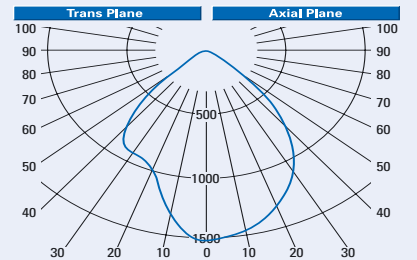
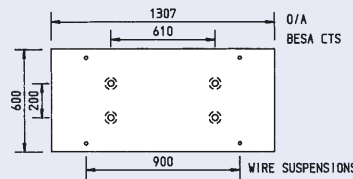
LG3 Luminance Values (cd/m2)

for initial lamp 1413 lumens, (T8K)

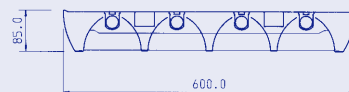
Angle	0	30	60	90
45	2769.3	2761.0	2341.3	2504.5
50	1852.0	2055.4	1736.6	1419.7
55	899.2	1125.0	790.4	242.2
60	117.8	386.2	106.0	82.4
65	97.5	153.2	91.9	78.0
70	103.3	113.6	96.4	82.0
75	68.2	45.5	45.5	22.7
80	0.0	0.0	0.0	0.0
85	0.0	0.0	0.0	0.0

Triple 4ft 36 Watt lamps 26mm diameter only

Control gear	Product Ref
Switch Start	CF2LID-34SS
Pulse Start	CF2LID-34EP
High Frequency	CF2LID-34HF



Quad Lamps

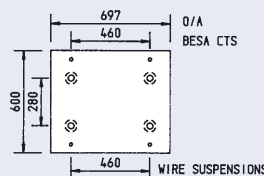


Photometric Data
Test No 198/LMT/HEVA
Light Output Ratio Up.00 Down.57 Total.57
SHR MAX 1.45 SHR Trans 1.55

Utilisation Factors UF(F)				SHR NOM = 1.25							
Room Reflectances			Room Index								
C	W	F	.75	1.00	1.25	1.50	2.00	2.50	3.00	4.00	5.00
.70	.50	.20	.43	.48	.51	.53	.56	.58	.59	.61	.62
	.30		.40	.45	.49	.51	.54	.56	.58	.59	.61
	.10		.38	.43	.46	.49	.52	.54	.56	.58	.60
.50	.50	.20	.42	.47	.50	.52	.55	.56	.57	.59	.60
	.30		.40	.45	.48	.50	.53	.55	.56	.58	.59
	.10		.38	.43	.46	.48	.51	.53	.55	.57	.58
.30	.50	.20	.42	.46	.49	.51	.53	.55	.56	.57	.57
	.30		.39	.44	.47	.49	.52	.53	.54	.56	.57
	.10		.37	.42	.45	.48	.50	.52	.53	.55	.56
00	00	00	.36	.41	.44	.46	.49	.50	.51	.53	.53
BZ Class			1	1	1	1	1	1	1	1	1

Quad 2ft 18 Watt lamps 26mm diameter only

Control gear	Product Ref
Switch Start	CF2LIC-42SS
Pulse Start	CF2LIC-42EP
High Frequency	CF2LIC-42HF



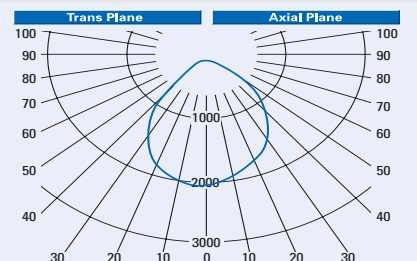
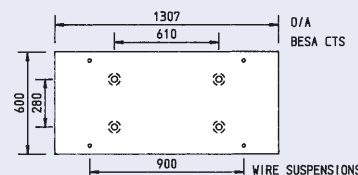
LG3 Luminance Values (cd/m2)

for initial lamp 1450 lumens, (T8K)

Angle	0	30	60	90
45	2381.0	2939.2	3638.7	4085.3
50	1170.5	1867.3	2722.0	3173.2
55	275.3	876.4	1724.7	1365.1
60	109.6	290.0	567.1	261.0
65	125.8	183.0	144.9	137.2
70	136.6	136.6	131.9	131.9
75	161.8	174.3	149.4	161.8
80	157.7	129.9	111.3	111.3
85	0.0	0.0	0.0	0.0

Quad 4ft 36 Watt lamps 26mm diameter only

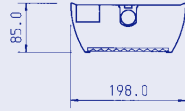
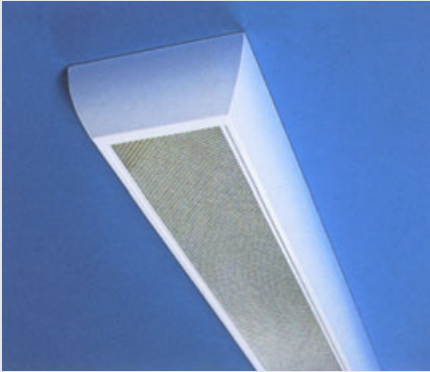
Control gear	Product Ref
Switch Start	CF2LIC-44SS
Pulse Start	CF2LIC-44EP
High Frequency	CF2LIC-44HF



CF^P

The lay in prismatic controller is manufactured from polycarbonate prismatic and is a TPA class material. The shallow surface luminaire body is manufactured from zinc coated sheet steel and is supplied as standard in gloss white, other colour finishes are available to order.

Single Lamp

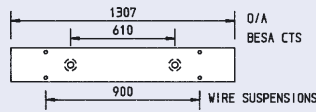


Photometric Data
Test No 199/LMT/HEVA
Light Output Ratio Up.00 Down.41 Total.41
SHR MAX 1.33 SHR Trans 1.40

Utilisation Factors UF(F)				SHR NOM = 1.25							
Room Reflectances			Room Index								
C	W	F	.75	1.00	1.25	1.50	2.00	2.50	3.00	4.00	5.00
.70	.50	.20	.28	.32	.34	.36	.39	.40	.42	.43	.44
.30			.25	.29	.32	.34	.37	.39	.40	.42	.43
.10			.23	.27	.30	.32	.35	.37	.38	.40	.42
.50	.50	.20	.27	.31	.34	.35	.38	.39	.40	.41	.42
.30			.25	.29	.31	.33	.36	.38	.39	.40	.41
.10			.23	.27	.30	.32	.34	.36	.38	.39	.40
.30	.50	.20	.27	.30	.33	.34	.36	.38	.39	.40	.41
.30			.25	.28	.31	.33	.35	.37	.38	.39	.40
.10			.23	.27	.29	.31	.34	.35	.37	.38	.39
00	00	00	.22	.26	.28	.30	.32	.34	.35	.36	.37
BZ Class			2	2	2	2	2	2	2	3	3

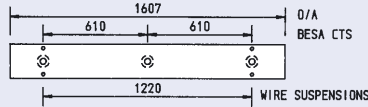
Single 4ft 36 Watt lamp 26mm diameter only

Control gear	Product Ref
Switch Start	CFP-14SS
Pulse Start	CFP-14EP
High Frequency	CFP-14HF



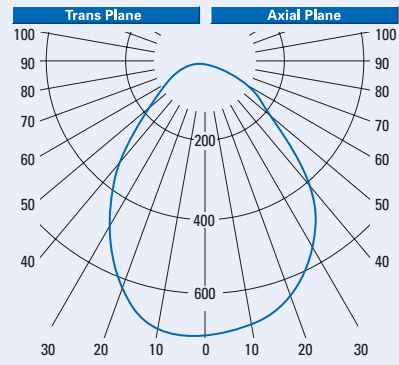
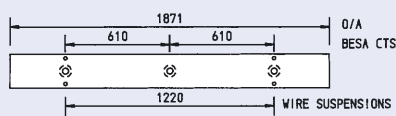
Single 5ft 58 Watt lamp 26mm diameter only

Control gear	Product Ref
Switch Start	CFP-15SS
Pulse Start	CFP-15EP
High Frequency	CFP-15HF

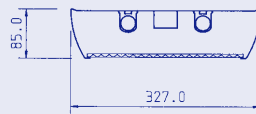
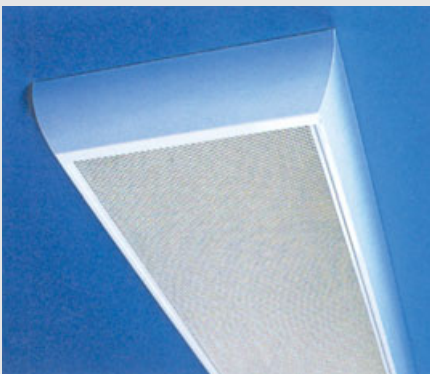


Single 6ft 70 Watt lamp 26mm diameter only

Control gear	Product Ref
Switch Start	CFP-16SS
Pulse Start	CFP-16EP
High Frequency	CFP-16HF



Twin Lamps

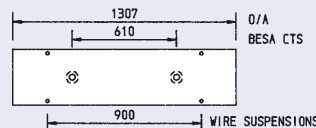


Photometric Data
Test No 200/LMT/HEVA
Light Output Ratio Up.00 Down.50 Total.50
SHR MAX 1.54 SHR Trans 1.71

Utilisation Factors UF(F)				SHR NOM = 1.50							
Room Reflectances			Room Index								
C	W	F	.75	1.00	1.25	1.50	2.00	2.50	3.00	4.00	5.00
.70	.50	.20	.35	.39	.42	.44	.47	.49	.50	.52	.53
.30			.31	.35	.39	.41	.44	.47	.48	.50	.52
.10			.29	.33	.36	.39	.42	.45	.47	.49	.51
.50	.50	.20	.34	.38	.41	.43	.45	.47	.49	.50	.51
.30			.31	.35	.38	.40	.43	.45	.47	.49	.50
.10			.29	.33	.36	.38	.42	.44	.45	.48	.49
.30	.50	.20	.33	.37	.40	.41	.44	.46	.47	.48	.49
.30			.31	.34	.37	.39	.42	.44	.46	.47	.48
.10			.29	.32	.36	.38	.41	.43	.44	.46	.48
00	00	00	.28	.31	.34	.36	.39	.41	.42	.44	.45
BZ Class			2	2	2	2	2	2	2	3	3

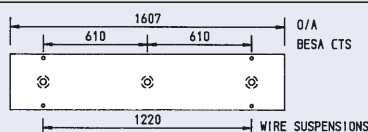
Twin 4ft 36 Watt lamps 26mm diameter only

Control gear	Product Ref
Switch Start	CFP-24SS
Pulse Start	CFP-24EP
High Frequency	CFP-24HF



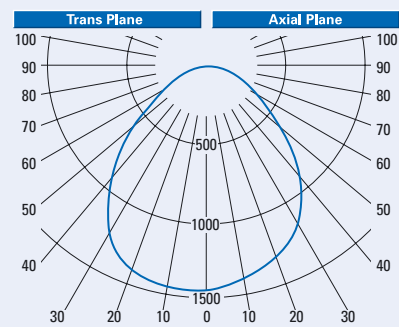
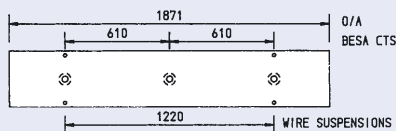
Twin 5ft 58 Watt lamps 26mm diameter only

Control gear	Product Ref
Switch Start	CFP-25SS
Pulse Start	CFP-25EP
High Frequency	CFP-25HF



Twin 6ft 70 Watt lamps 26mm diameter only

Control gear	Product Ref
Switch Start	CFP-26SS
Pulse Start	CFP-26EP
High Frequency	CFP-26HF



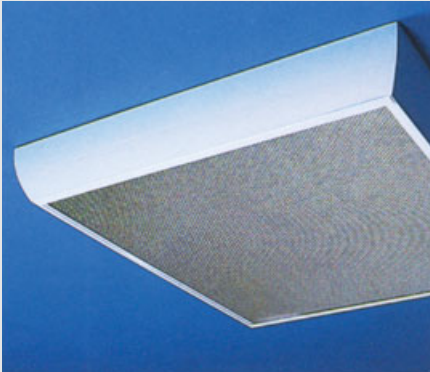
Prismatic Polycarbonate Shallow Surface Luminaires



FM2266
BS5750
PART 2

All fittings can be supplied equipped with a single lamp emergency pack
Other sizes available on request. Full Photometric test reports available on request

Triple Lamps

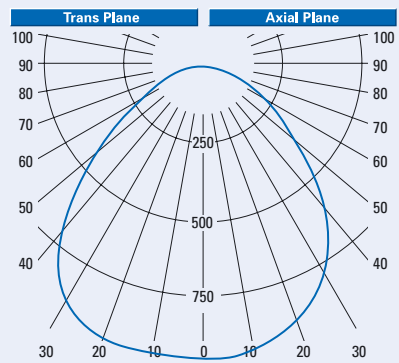
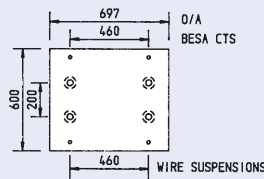


Photometric Data
Test No 201/LMT/HEVA
Light Output Ratio Up.00 Down.58 Total.58
SHR MAX 1.61 SHR Trans 1.84

Utilisation Factors UF(F)				SHR NOM = 1.50							
Room Reflectances			Room Index								
C	W	F	.75	1.00	1.25	1.50	2.00	2.50	3.00	4.00	5.00
.70	.50	.20	.40	.44	.48	.51	.54	.56	.58	.60	.61
	.30		.36	.40	.44	.47	.51	.54	.56	.58	.60
	.10		.33	.38	.42	.45	.49	.52	.54	.56	.58
.50	.50	.20	.39	.43	.47	.49	.52	.54	.56	.58	.59
	.30		.35	.40	.44	.46	.50	.52	.54	.56	.58
	.10		.33	.37	.41	.44	.48	.50	.52	.55	.57
.30	.50	.20	.38	.42	.45	.48	.51	.53	.54	.56	.57
	.30		.35	.39	.43	.45	.49	.51	.52	.54	.56
	.10		.33	.37	.41	.43	.47	.49	.51	.53	.55
00	00	00	.32	.36	.39	.42	.45	.47	.49	.51	.52
BZ Class			2	2	2	3	3	2	3	3	3

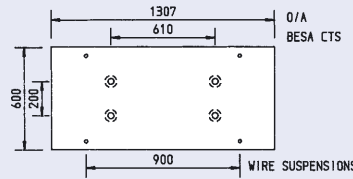
Triple 2ft 18 Watt lamps 26mm diameter only

Control gear	Product Ref
Switch Start	CFP-32SS
Pulse Start	CFP-32EP
High Frequency	CFP-32HF

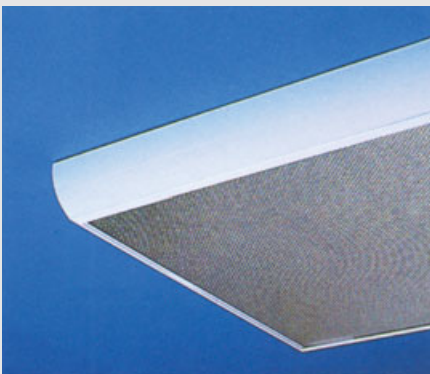


Triple 4ft 36 Watt lamps 26mm diameter only

Control gear	Product Ref
Switch Start	CFP-34SS
Pulse Start	CFP-34EP
High Frequency	CFP-34HF



Quad Lamps

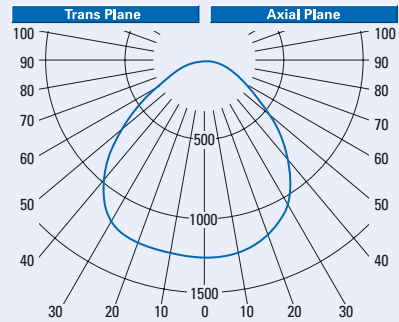
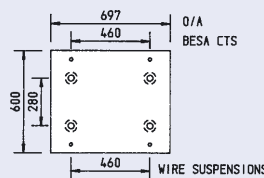


Photometric Data
Test No 202/LMT/HEVA
Light Output Ratio Up.00 Down.62 Total.62
SHR MAX 1.68 SHR Trans 1.92

Utilisation Factors UF(F)				SHR NOM = 1.50							
Room Reflectances			Room Index								
C	W	F	.75	1.00	1.25	1.50	2.00	2.50	3.00	4.00	5.00
.70	.50	.20	.41	.46	.50	.53	.57	.60	.61	.64	.65
	.30		.37	.42	.46	.49	.54	.57	.59	.62	.63
	.10		.34	.39	.43	.46	.51	.54	.56	.60	.62
.50	.50	.20	.40	.45	.49	.51	.55	.58	.59	.61	.63
	.30		.36	.41	.45	.48	.52	.55	.57	.60	.61
	.10		.33	.38	.43	.46	.50	.53	.55	.58	.60
.30	.50	.20	.39	.44	.47	.50	.53	.56	.57	.59	.60
	.30		.36	.40	.44	.47	.51	.54	.55	.58	.59
	.10		.33	.38	.42	.45	.49	.52	.54	.56	.58
00	00	00	.32	.36	.40	.43	.47	.49	.51	.54	.55
BZ Class			3	3	3	3	3	3	3	3	3

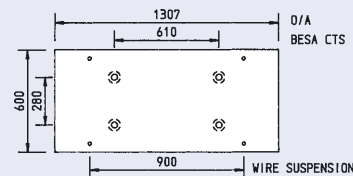
Quad 2ft 18 Watt lamps 26mm diameter only

Control gear	Product Ref
Switch Start	CFP-42SS
Pulse Start	CFP-42EP
High Frequency	CFP-42HF



Quad 4ft 36 Watt lamps 26mm diameter only

Control gear	Product Ref
Switch Start	CFP-44SS
Pulse Start	CFP-44EP
High Frequency	CFP-44HF



Prismatic Polycarbonate



CF Series Continuous Mounting

For further details and prices please contact our Sales Department on 0181 504 9691

Curved Profile Luminaires

The 'CF' Series of shallow surface luminaires are also manufactured for continuous mounting for both the single and twin lamp versions. These are designed to accommodate the full range of louvres and controllers. They can also be suspended on wire suspension sets and the luminaire body can be supplied with uplighting slots on request.

We also manufacture various junction boxes for both single and twin lamp versions to facilitate flexible lighting designs and configurations to be constructed

Single continuous fittings with corner box

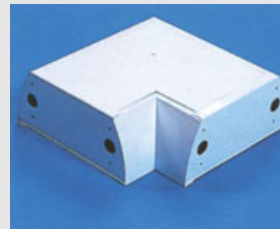


Wire suspension set

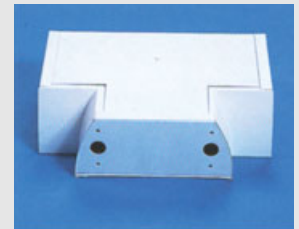


Junction Boxes

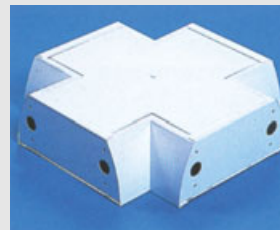
Type	Ref	Description
Single Lamp	LJB1	'L' Corner Box
Twin Lamp	LJB2	'L' Corner Box
Single Lamp	TJB1	'T' Tee Box
Twin Lamp	TJB2	'T' Tee Box
Single Lamp	XJB1	'X' Cross Box
Twin Lamp	XJB2	'X' Cross Box



'L' Corner Box



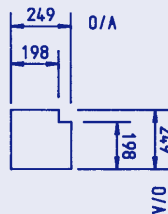
'T' Tee Box



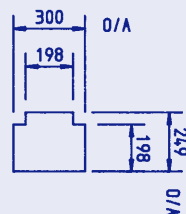
'X' Cross Box

Dimensions of Junction Boxes

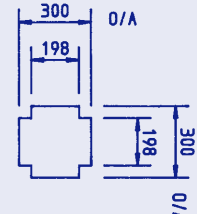
Single Lamp 'L' Box



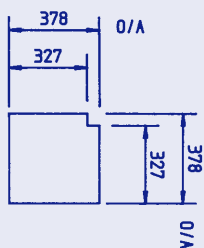
Single Lamp 'T' Box



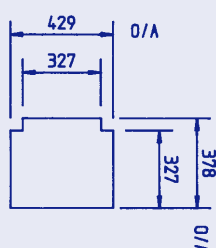
Single Lamp 'X' Box



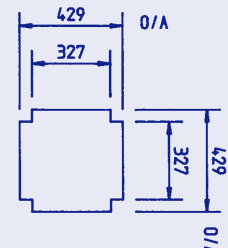
Twin Lamp 'L' Box



Twin Lamp 'T' Box



Twin Lamp 'X' Box

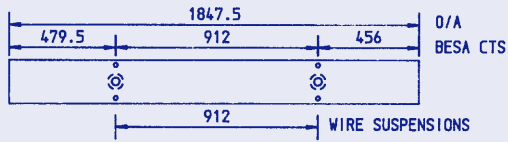


CF Series Continuous Mounting

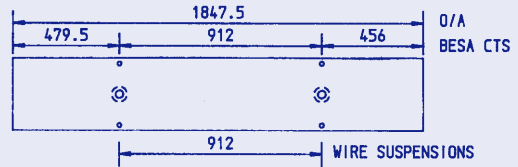
For further details and prices please contact our Sales Department on 0181 504 9691

End of Run Lighting Units

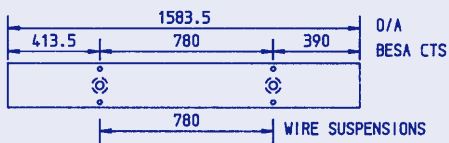
6' Single



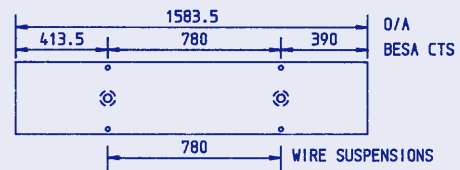
6' Twin



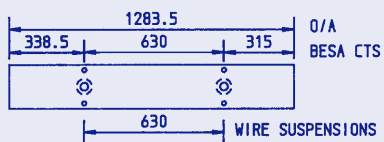
5' Single



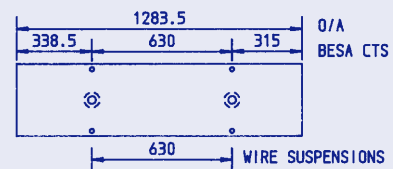
5' Twin



4' Single

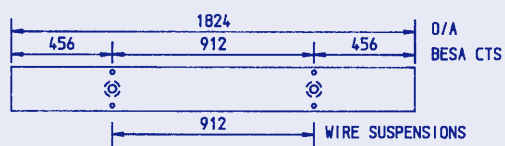


4' Twin

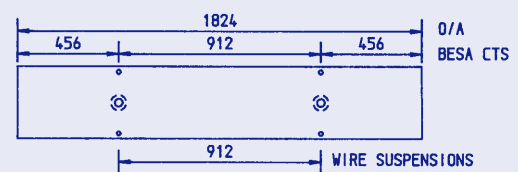


Middle of Run Lighting Units

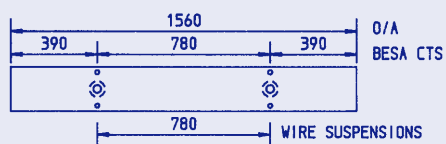
6' Single



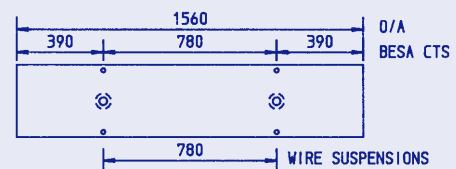
6' Twin



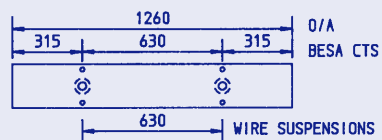
5' Single



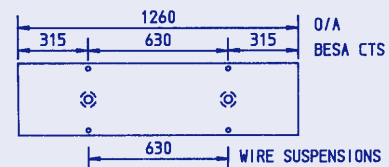
5' Twin



4' Single



4' Twin



CF

Series

Other Products

- Energy Saving recessed and surface mounted luminaires
- Exterior IP65 surface mounted luminaires
- Surface mounted luminaires with Cat 2, reflector and white louvres
- Fluorescent battens with reflectors and controllers
- Lighting trunking system with reflectors and controllers
- Recessed modules with Cat 2, reflector, white louvres and TPa prismatic polycarbonate panels

Other Services

- Schemes
Using up to date computer technology we are able to design or check lighting schemes for customers who wish to utilise Fluorel products. Our sales team will be pleased to advise
- Design
Our Design Department is able to assist with products that are not in our standard catalogue
- Manufacture
With full manufacturing facilities we are able to produce bespoke products

Fluorel Lighting Limited
Designers and manufacturers
of lighting fittings

Riverside Works, Broadmead Rd,
Woodford Green, Essex, IG8 8PG
Tel 020 8504 9691 Fax: 020 8506 1792
www.fluorel.co.uk

Elementary by design **Fluorel**